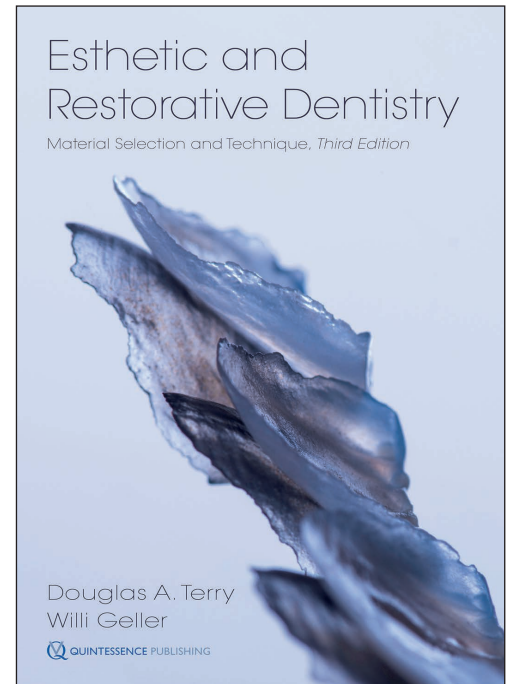


Video Content

Click on the thumbnails to view the video.



Chapter 1 • Diagnostic and Communication Concepts



Introduction

Chapter 2 • Principles of Tooth Preparation



Introduction



Criteria for Improving Adhesion at the Restorative Interface

Chapter 3 • Composite Resins



Introduction

Chapter 4 • Ceramic Materials



Introduction



Single Central Incisor

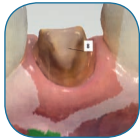
Chapter 5 • The Impression Process



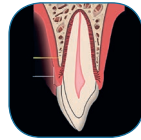
Introduction



Digital Highway



Trios



Guidelines for Tissue Management

Chapter 6 • Mechanisms of Adhesion



Introduction



Criteria for Improving Adhesion at the Restorative Interface

Chapter 7 • Contemporary Adhesive Cements

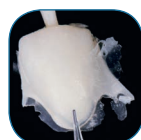


Introduction

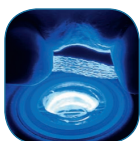
Chapter 8 • Provisionalization



Introduction



Developing a Functional Composite Prototype



Resin-Bonded Bridge (Indirect Restoration)

Chapter 9 • Esthetic Post Systems



Introduction



Ferrule Effect

Chapter 10 • Finishing and Polishing Esthetic Restorative Materials



Introduction

Chapter 11 • Dental Photography



Introduction

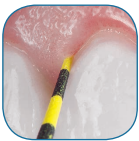


Dental Photography

Chapter 12 • Periodontal Plastic Surgery



Introduction



Biologic Width

Chapter 13 • Interdisciplinary Implantology



Introduction

Chapter 14 • Biomodification of Tooth Discoloration



Introduction